

UPDATE 3 - 08:45 05/02/2026: INCIDENT - Moa Point - Wastewater Discharge

Accountable – Treatment and Control Systems – Jeremy McKibbin

Response:	Level 5
Incident Controller:	Sam Lister/Garry Butler
Operations Lead:	Dave Neru (Veolia)
Technical Advisor:	Steve Hutchison
Environmental Lead:	Jude Chittock
Stakeholder Comms:	Glenis Bruin
External Comms:	John Donnachie/Molly Callanan-Bartlett
Iwi Liaison:	Talia Rei

Kia Ora Koutou,

Staff are onsite at the impacted areas, distributing fliers and speaking with the local community. This will continue throughout the day.

Crews will be back onsite today, working to ascertain the full impact of the flooding on the plant's equipment and operations. This assessment will take some time, and we expect that this will be an extended outage at the plant.

We are prioritising an investigation into diverting partially screened wastewater to the long outfall pipe. Discharging partially screened wastewater out to sea via the 1.8km long outfall pipe will allow for greater dilution of the wastewater in the Cook Strait, rather than untreated wastewater flowing around the coastline.

A further update will be provided at approximately 11:30am, following the next emergency management meeting.

Ngā mihi
Glenis

UPDATE 2 – 19:20: INCIDENT - Moa Point - Wastewater Discharge

Accountable – Treatment and Control Systems – Jeremy McKibbin

Response:	Level 5
Incident Controller:	Sam Lister/Garry Butler
Operations Lead:	Dave Neru (Veolia)
Technical Advisor:	Steve Hutchison
Environmental Lead:	Jude Chittock
Stakeholder Comms:	Glenis Bruin
External Comms:	John Donnachie/Molly Callanan-Bartlett
Iwi Liaison:	Talia Rei

Kia Ora Koutou

With power cut off at the plant and significant health and safety hazards present, it is unsafe for our teams to work onsite through the night.

Tomorrow morning, staff will be at the areas impacted by the wastewater discharge, distributing fliers to the local community.

Out of an abundance of caution, the sampling area has been increased to stretch from Breaker Bay to Seatoun. While we understand the risk of wastewater reaching from Tarakena Bay around to Seatoun to be very low, we are erring on the side of caution and completing sampling at these sites every 24 hours.

The Rāhui extends to Breaker Bay and does not cover the area of coastline through to Seatoun. However, we note LAWAs existing advice following the recent heavy rain. LAWA advises to not swim for 2-3 days following heavy rain.

We will provide a brief update tomorrow morning, and a more fulsome update will be provided following tomorrow morning's emergency management meeting at approximately 11:30am.

Ngā mihi
Glenis

UPDATE 1 - 16:20: INCIDENT - Moa Point - Wastewater Discharge

Accountable – Treatment and Control Systems – Jeremy McKibbin

Response:	Level 5
Incident Controller:	Sam Lister/Garry Butler
Operations Lead:	Dave Neru (Veolia)
Technical Advisor:	Steve Hutchison
Environmental Lead:	Jude Chittock
Stakeholder Comms:	Glenis Bruin
External Comms:	John Donnachie/Molly Callanan-Bartlett
Iwi Liaison:	Talia Rei

Kia Ora Koutou

Our emergency response team met again at 1pm today. We are diverting all available resource to help with this issue, and teams will continue responding through the long weekend.

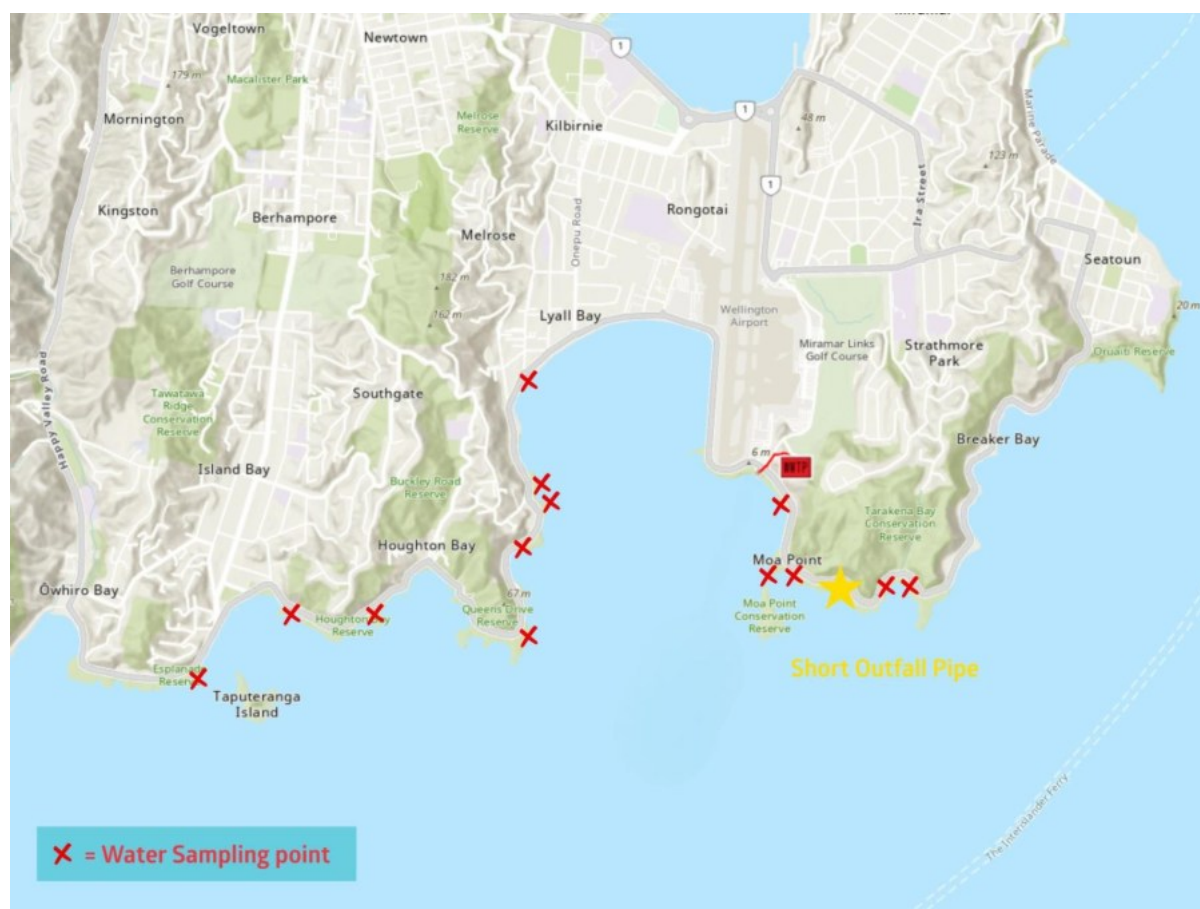
Our top priority is to protect public health and safety. Please be aware that untreated sewage poses a high risk to public health. Due to the ongoing discharge of untreated wastewater via the short outfall pipe's discharge point at Tarakena Bay, we strongly advise that people avoid the coastal area along the south of Wellington until further notice. Do not enter the water or collect kaimoana from this area.

A rāhui has been placed from Ōwhiro Bay to Breaker Bay, and will remain in place until further notice. Signage is being placed around all impacted areas, and teams are continuing to door-knock local residents and businesses. Social media has been shared on our Facebook, Instagram and Neighbourly accounts, and our council, iwi and community partners are sharing with their audiences. Public Health, LAWA, Taumata Arowai and Greater Wellington have all been informed.

A media stand up was held at 1:30pm, viewable on [Stuff](#). We have had significant media interest and coverage, with the below interviews scheduled:

Media org	Contact	Interview format	Timing
Newstalk ZB	Kevin Calvert	Live cross	4pm
RNZ	Natalie Akoree	Live cross	5.05pm
Ryan Bridge Show Tomorrow	Simon Plumb	Pre-record	7pm
Breakfast TV 1	Julie Hill	Pre-record	7.05am

Sampling is occurring along the coast at the sites marked on the below map. We are also assessing ocean currents to understand if wider sampling is needed.



We are working to ascertain the full impact of the flooding on the plant's equipment and operations. This assessment will take some time. Our first priority is to wash down accessways and complete health and safety monitoring to make it safe for our teams to enter the site to complete this assessment.

We expect that this will be an extended outage. We are prioritising an investigation into diverting partially screened wastewater to the long outfall pipe. Discharging partially screened wastewater out to sea via the 1.8km long outfall pipe will allow for greater dilution of the wastewater in the Cook Strait, rather than untreated wastewater flowing around the coastline.

We have observed odour around the short outfall pipe's discharge point. We are assessing options to mitigate odour in the short term, and protect the health and balance of the plant's biological process to reduce the risk of any longer-term odour.

There are no impacts to the wider wastewater network or drinking water network. Drinking water remains safe to drink.

Please note that due to recent heavy rain, LAWA has designated areas around Wellington Harbour and the Eastern Bays in Lower Hutt as unsuitable for swimming. This is not related to the issue at Moa Point.

The EMT will meet again this evening with a further update to follow if there are any changes.

Ngā mihi
Glenis

Glenis Bruin
Senior Information & Escalation Coordinator
Network Operations Group
Ph 04 912 4470 Mob 021 346 438
Hours – Monday, Tuesday, Thursday, Friday 07:00 – 15:30

INCIDENT - Moa Point - Wastewater Discharge

Accountable – Treatment and Control Systems – Jeremy McKibbin

Response:	Level 5
Incident Controller:	Sam Lister/Garry Butler
Operations Lead:	Dave Neru (Veolia)
Technical Advisor:	Steve Hutchison
Environmental Lead:	Jude Chittock
Stakeholder Comms:	Ropeti Taito/Sam Wohlers
External Comms:	John Donnachie/Molly Callanan-Bartlett
Iwi Liaison:	Talia Rei

Kia Ora Koutou

Background (Current Status):

Wellington Water is responding to a major incident at the Moa Point Wastewater Treatment Plant which has resulted in untreated wastewater discharging into Tarakena Bay on the south coast. The discharge, caused by equipment failure, started at 1am this morning and is still occurring. The Emergency Management Team (EMT) has been stood up and working at pace to stabilise the situation. The equipment failure has led to the plant needing to be shut down. All power at the plant has been shut off and staff have been evacuated from the site.

Our immediate focus is restoring power to the plant, resuming service, and diverting wastewater to the long outfall pipe which will improve dispersion and reduce impact on the coastline. This is a complex incident, and all necessary resources are being utilised.

Action Plan:

- Assessing extent of electrical equipment damage onsite.
- Investigate options to re-route discharge to the long outfall.
- Health and Safety teams activated.
- Ground support dispatched to initiate public awareness engagement along the shoreline.

Environmental Actions:

- Public health signs are being erected across the immediate and wider shoreline including Lyall Bay and South Coast beaches.
- The public should observe signage and not enter the water or collect kai moana.
- Notifications and engagement underway with GWRC, local Iwi, Regional Public Health and Council.
- Water sampling will be undertaken shortly.
- LAWA have been advised for escalated notification actions.

Communications:

- Targeted social media – including local community pages
- Updated website notifications including a banner on the front page
- Media advisory will be released

The EMT will meet again at 13:00 with a further update to follow thereafter.

Nga Mihi

Ropeti Taito

Customer Information and Resolution Lead



Mob 021 793 872

www.wellingtonwater.co.nz

Wellington Water is owned by the Hutt City, Porirua City, Upper Hutt City and Wellington City, South Wairarapa District and Greater Wellington Regional Councils. We manage their drinking water, wastewater and stormwater services.

Wet wipes clog pipes!
Protect our environment
and always put wet wipes in the bin.

